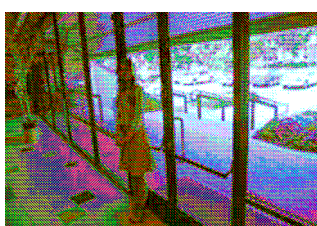




Super wide dynamic Mini camera series (Auto ICR optional)

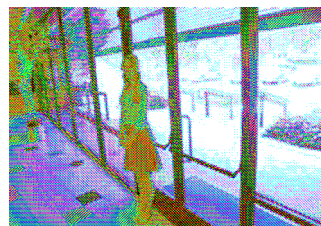
- 1/3-inch WDR digital image sensor
- Innovative 32-bit digital signal processor
- Super wide dynamic range clear and most natural image even under different intensity of illumination
- Superior color rendering
- Accurately displays color even in difficult lighting such as backlight, indoor or outdoor, glare and reflection lighting
- Resolution: 540TVL
- Captures sharp and crisp images even in highly variable lighting conditions
- No vertical smear
- Eliminates vertical smear and dramatically reduces blooming and other image artifacts
- High image compression
- Improves image quality with smaller file size compared to CCD security cameras
- Digital noise reduction (DNR)
- True day and night feature
- Automatically switches from color to mono in low light
- With IR cut filter
- On screen display and camera title



Normal



WDR

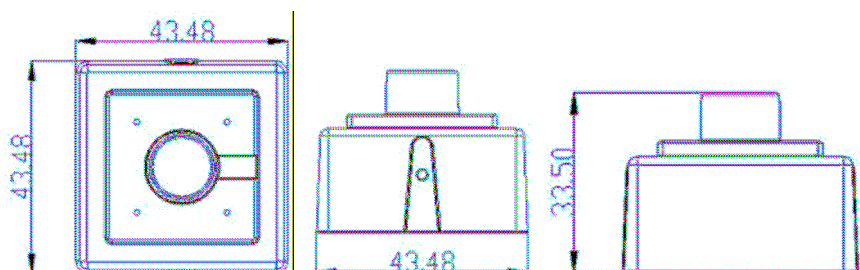


BLC

Specification:

Model	TBO-8036W
Imaging Sensor	1/3" DPS Technologies(D1500R)/GMY
Effective Pixels	720(H)*540(V)
Minimum illumination	Color:0.8Lux(F1.2,50 IRE);Slow Shutter:0.08Lux; 0Lux(IR LED ON)
Pixel Size	7 μ m x 7 μ m
Resolution	540 TV Lines

Video Standard	PAL / NTSC Compatible (Selectable by Menu)
Dynamic Range	102dB typical, 120dB Maximum
White Balance	ATW/AWB/MANUAL
AGC	Low/Medium/High/Custom
Digital Noise Reduction	Built-in, ON or OFF selectable
Privacy Masking	Yes
Motion Detection	Yes
True Day/Night	Yes(ICR /+IR LEDs)
Digital PTZ	Yes
RS-485 Remote control	Optional
Alarm In/Out	Yes
Gamma	Auto/Manual
Auto Iris Function	DC/Video selectable/ (DC iris level adjustable)
Configuration	On Screen Display(OSD) menu
Camera Title	Maximum 18 characters
S/N Ratio	More than 50dB
Video Output	1.0Vp-p Composite Video Output, 75 Ohm
Power Requirement	DC12V/AC24V or
Mount	C/CS Mount Vari-focus 4-9mm M12 Lens
Sync. Mode	Internal(DC12V);Linelock (only AC24V)
Operating Temp.	-10°C to 50°C

Dimension:

TBO-8036W	WDR day/night, 1/3" DPS sensor, Resolution 480TVL, Minimum illumination color 0.8Lux(F1.2 50IRE), slow shutter:0.008Lux , electronic shutter :1/50,Auto BLC, With OSD menu function,,CCD blind compensation, DC12V/AC24V (Banking preferred products) including lens already	\$149.00
-----------	--	----------

Remark: 1) Above price is EXW Shenzhen USD.

2) Delivery date: around within 7 days after receipt of payment

3)Terms of payment: T/T in advance

4)MOQ:10 PCs

5) Warranty: Two years

6)Certification: CE, FCC, RoHS, GSV, ISO9001 and etc.